

OREGON WINE

SOUTHERN OREGON: ELKTON OREGON



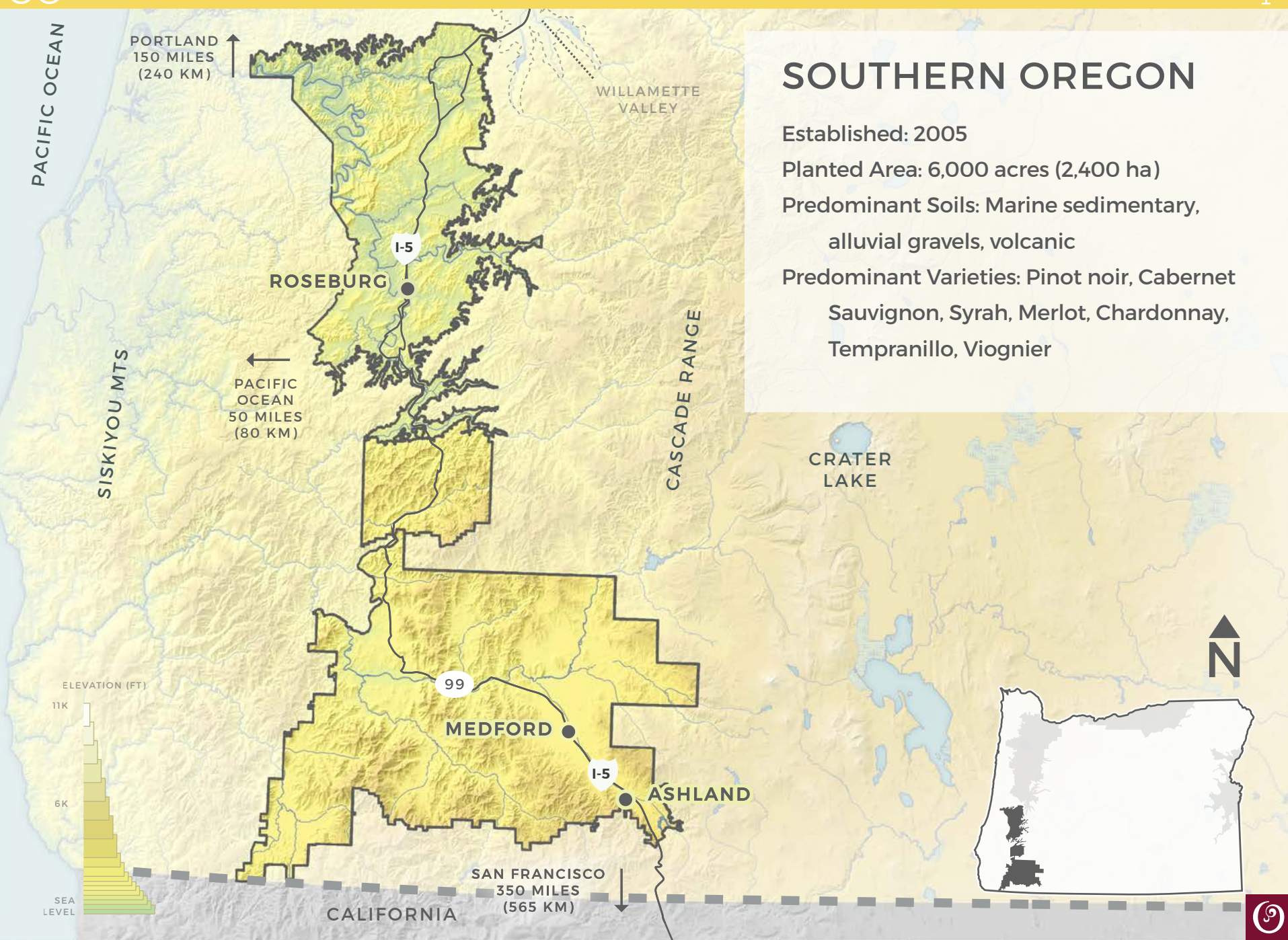
OREGON
WINE
BOARD

UPDATED 4.1.17



BY

This work is licensed under the Creative Commons Attribution 4.0 International License.
To view a copy of this license, visit <http://creativecommons.org/licenses/by/4.0/>.



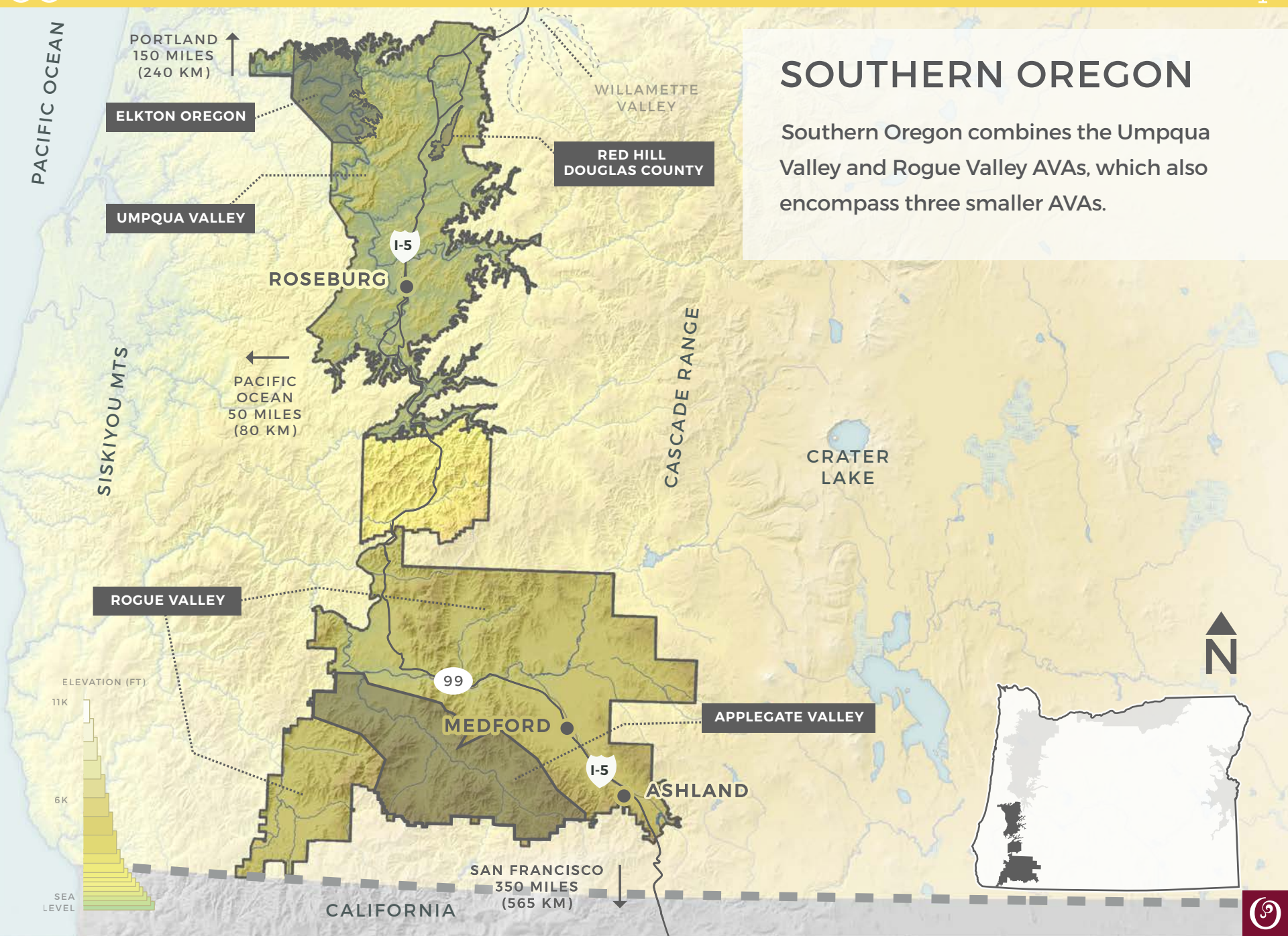
SOUTHERN OREGON

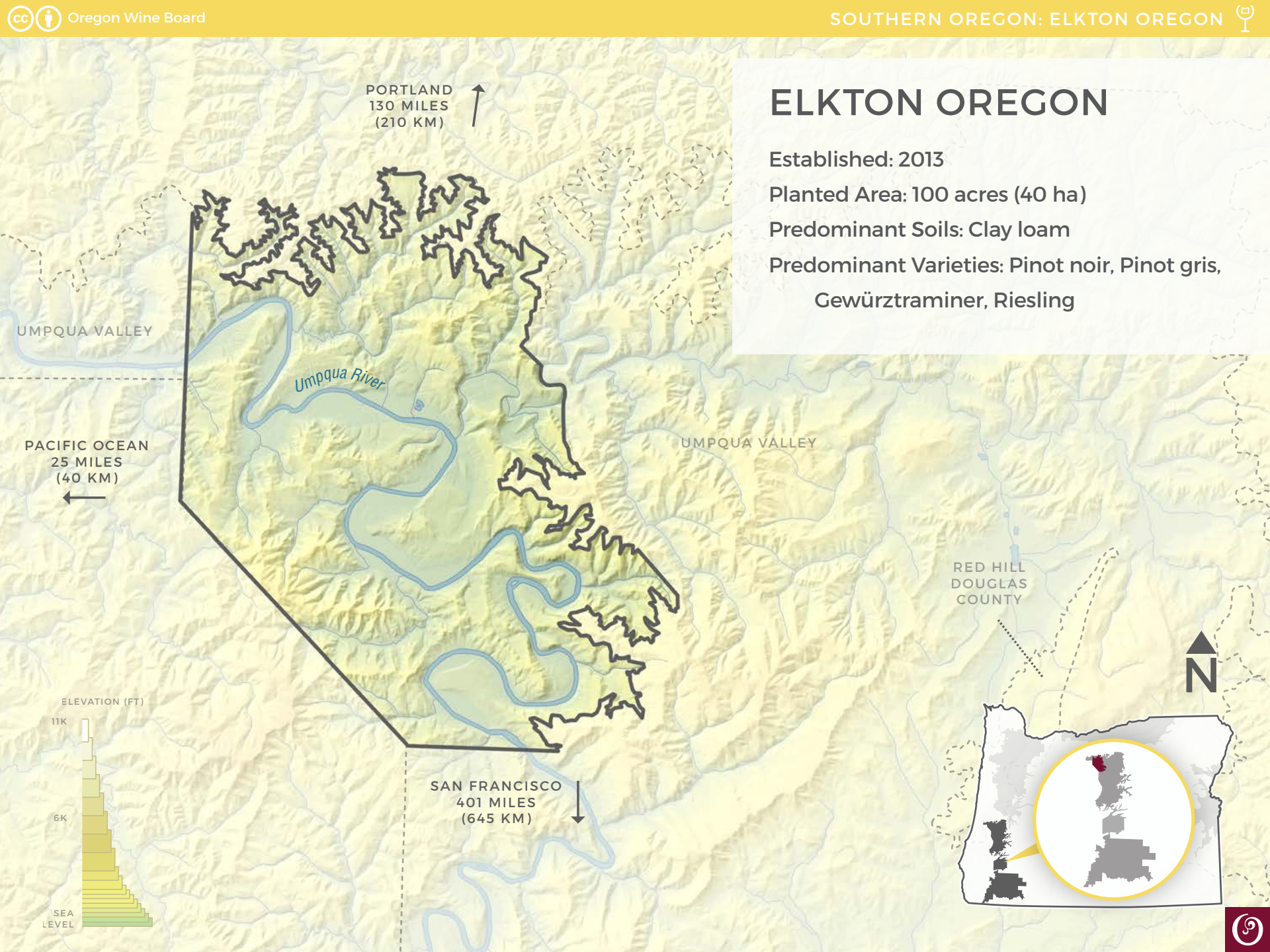
Established: 2005

Planted Area: 6,000 acres (2,400 ha)

Predominant Soils: Marine sedimentary,
alluvial gravels, volcanic

Predominant Varieties: Pinot noir, Cabernet
Sauvignon, Syrah, Merlot, Chardonnay,
Tempranillo, Viognier





ELKTON OREGON

Established: 2013

Planted Area: 100 acres (40 ha)

Predominant Soils: Clay loam

Predominant Varieties: Pinot noir, Pinot gris,
Gewürztraminer, Riesling





ELKTON OREGON



TERROIR

Cooler AVA in Southern Oregon, in some parts approaching the coolness of the Willamette Valley due to its high elevation and the strong afternoon breezes up the Umpqua River gorge.

Water retaining clay soils cause a decreased need to irrigate, resulting in lower yields.



WINE

Cool climate varieties produced in a lush style, fuller in body with bolder fruit notes than those grown in the Willamette Valley.



BRADLEY VINEYARD

