

OREGON WINE

SOUTHERN OREGON: UMPQUA VALLEY

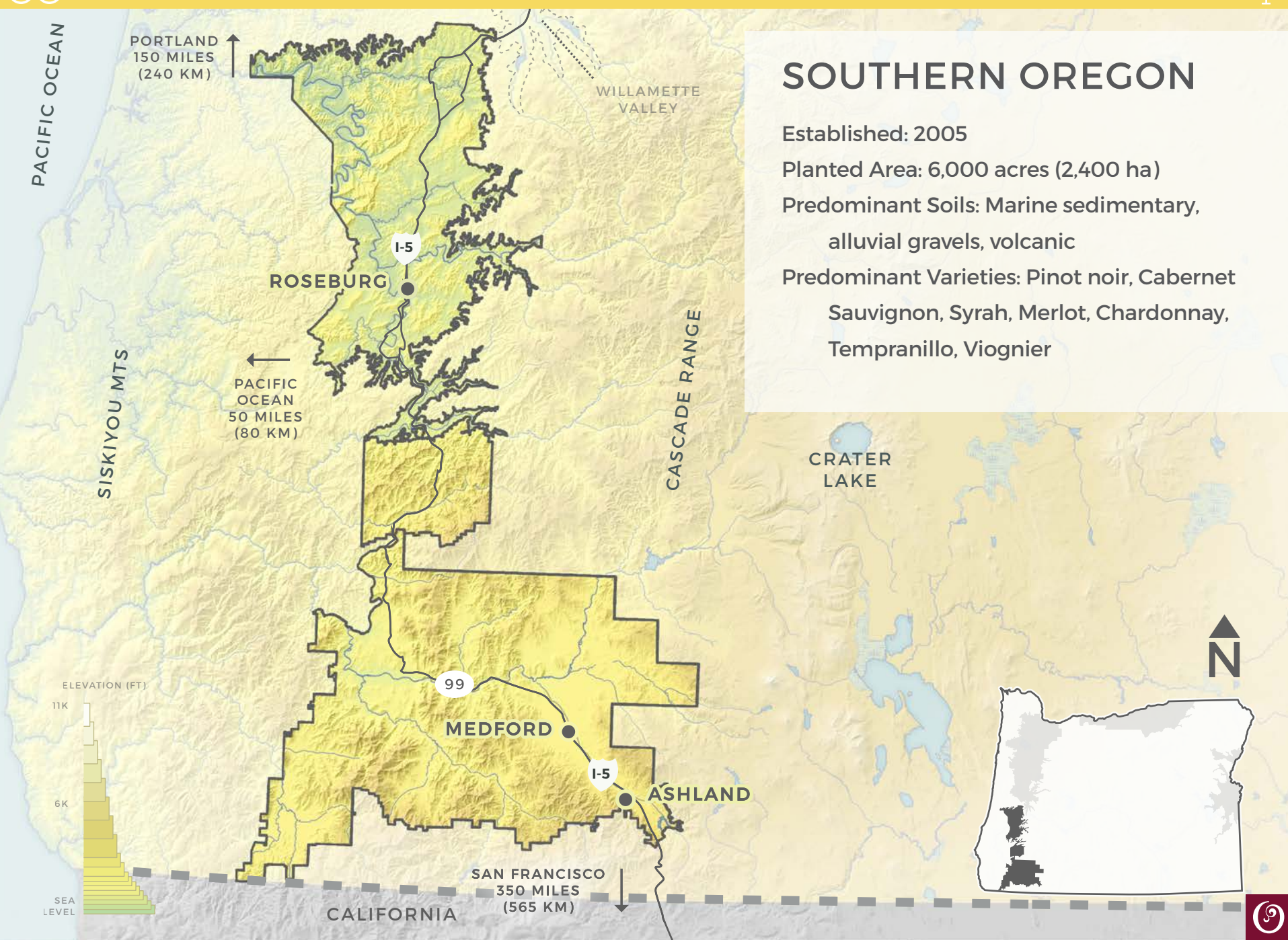


OREGON
WINE
BOARD

UPDATED 4.1.17



This work is licensed under the Creative Commons Attribution 4.0 International License.
To view a copy of this license, visit <http://creativecommons.org/licenses/by/4.0/>.



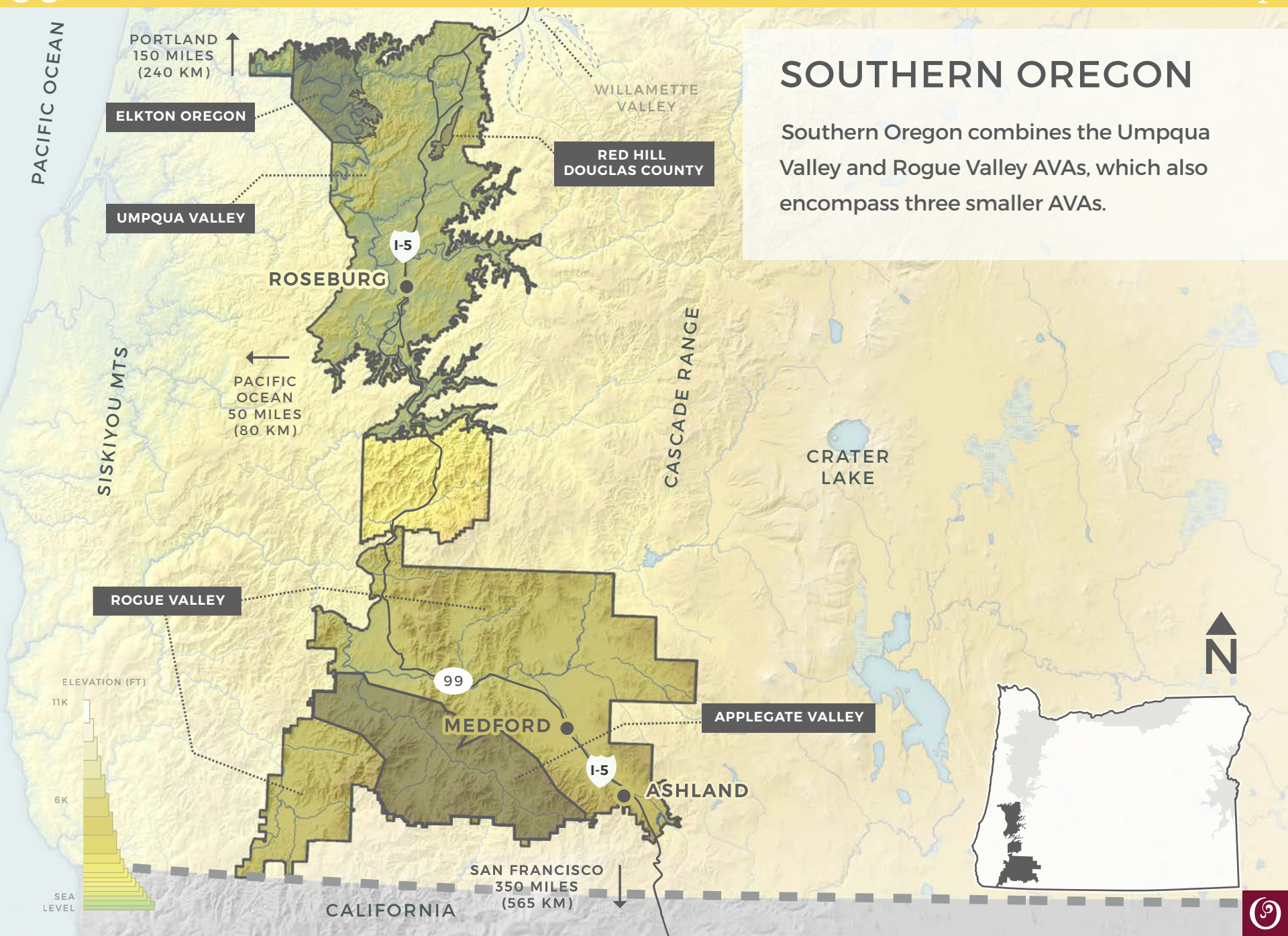
SOUTHERN OREGON

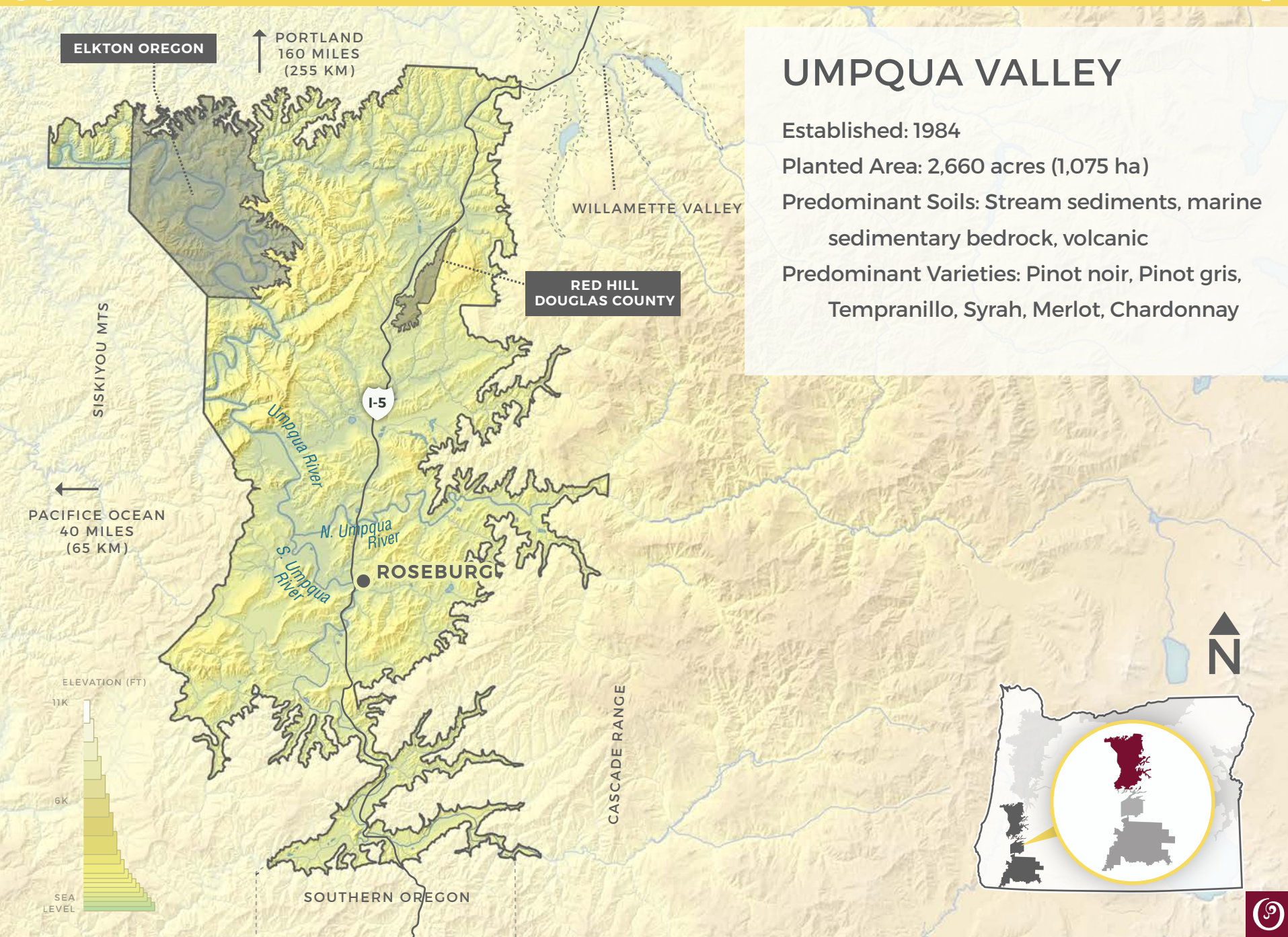
Established: 2005

Planted Area: 6,000 acres (2,400 ha)

Predominant Soils: Marine sedimentary,
alluvial gravels, volcanic

Predominant Varieties: Pinot noir, Cabernet
Sauvignon, Syrah, Merlot, Chardonnay,
Tempranillo, Viognier





UMPQUA VALLEY



The convergence of the Cascade, Coast and Klamath mountain ranges and the Umpqua River creates many micro-climates.

Growing season temperatures vary dramatically with up to 1,000 growing degree days difference from the north to south.

Diversity of region has inspired a culture of experimentation with varieties not commonly grown elsewhere in Oregon: Garnacha, Albariño, Grüner Veltliner, Malbec, Petit Verdot and more.



The long growing season lets grapes take their time in ripening, creating fruit with complex flavors, well balanced structure and minerality.



ABACELA FAULT LINE VINEYARD





MELROSE VINEYARDS

